



Liquid level gauge with reflex or transparent glass zGAU



Body material	Nominal pressure	Size	Max. temperature
N Carbon steel	C 16 bar	-	200°C
	E 40 bar	0 - XI	300°C
Q Alloy steel	C 16 bar	-	200°C
	E 40 bar	0 - XI	300°C
	F 63 bar	0 - XI	300°C
M Acid resistant steel	C 16 bar	-	200°C
	E 40 bar	0 - XI	300°C
	F 63 bar	0 - XI	250°C

FEATURES

- compact design
- multifunctional
- possibility to adapt the connections
- modern head design
- possibility to adapt the liquid level gauges to other lengths than standard ones
- in the version with flanged connections, the connection flanges of the heads are drilled at PN40 as for DN20 and made with type B1 sealing surfaces with projection according to PN EN 1092-1 as a standard
- in the version with threaded connections, the 1/2" (GZ) threaded connection as a standard
- in the version with welded connections, the possibility of making the connection according to the customer's needs

APPLICATION*

* Not all applications are suitable for every material version

industries



INDUSTRY



MARINE INDUSTRY



PETROCHEMISTRY



HEATING

media



TAP WATER



SEWAGE



GLYCOL

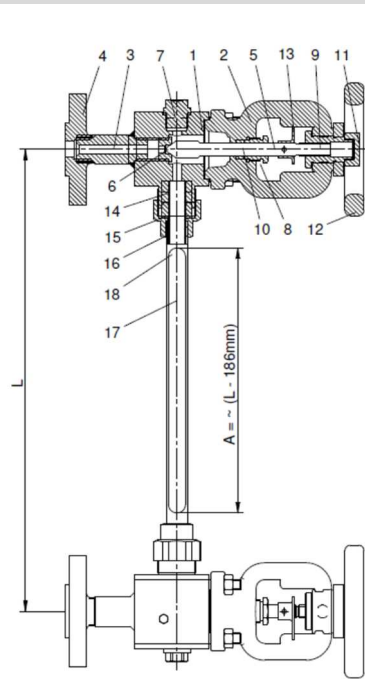


PROCESS WATER

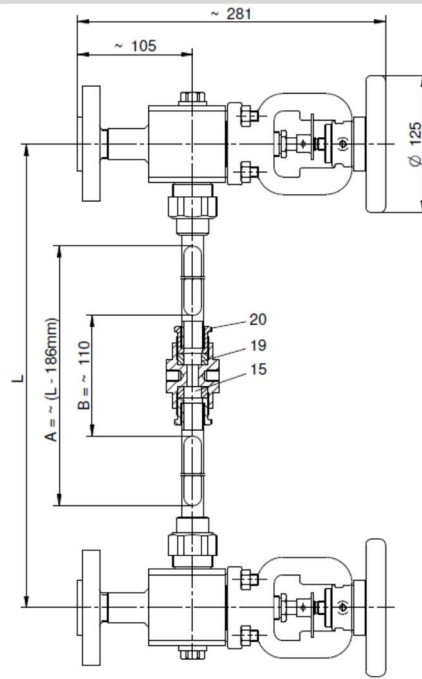
Data given can be changed without notice.

Edition 01/2018

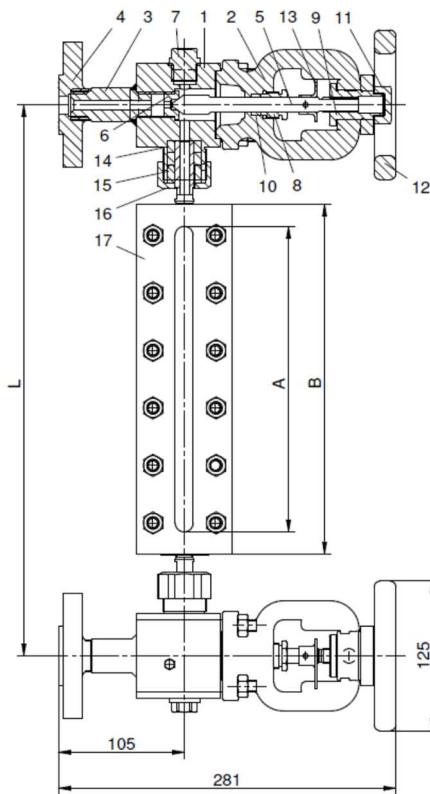
MATERIALS, DIMENSIONS



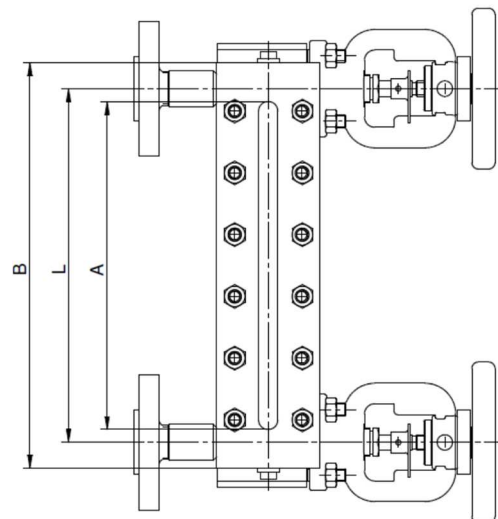
Version 8...



Version 9....



Version 6.



Version 7...

Data given can be changed without notice.

Edition 01/2018

ZETKAMA Sp. z o.o.
 Ul. 3 Maja 12
 PL 57-410 Ścinawka Średnia

Tel. +48 74 8652 193
 Tel. +48 74 8652 111
 Fax +48 74 8652 199

E-mail export@zetkama.com.pl
 www.zetkama.com

FIG.716

	Body material	N		Q		M	
	Type	60, 61, 62, 63, 64, 65 70, 71, 72, 73, 74, 75	80, 81, 82, 83, 84, 85 90, 91, 92, 93, 94, 95	60, 61, 62, 63, 64, 65 70, 71, 72, 73, 74, 75	80, 81, 82, 83, 84, 85 90, 91, 92, 93, 94, 95	60, 61, 62, 63, 64, 65 70, 71, 72, 73, 74, 75	80, 81, 82, 83, 84, 85 90, 91, 92, 93, 94, 95
1	Liquid level gauge head	S235JR 1.0037		13CrMo4-5 1.7335		X6CrNiTi18-10 1.4541	
2	Cover	GP240GH 1.0619				GX5CrNi19-10 1.4308	
3	Tube	S235JR 1.0037		13CrMo4-5 1.7335		X6CrNiTi18-10 1.4541	
4	Flange (60, 61, 70, 71, 80, 81, 90, 91)	S235JR 1.0037		13CrMo4-5 1.7335		X6CrNiTi18-10 1.4541	
	Threaded end connection (62, 63, 72, 73, 82, 83, 92, 93)	S235JR 1.0037		13CrMo4-5 1.7335		316 1.4401	
	End connection to be welded (64, 65, 74, 75, 85, 86, 94, 95)	S235JR 1.0037		13CrMo4-5 1.7335		X6CrNiTi18-10 1.4541	
5	Pin	X20Cr13 1.4021				X6CrNiTiMo17-2-2 1.4571	
6	Head screw	X6CrNiTi18-10 1.4541					
7	½" plug	Carbon steel				X6CrNiTi18-10 1.4541	
8	Gland	X20Cr13 1.4021				X6CrNiTi18-10 1.4541	
9	Bushing	X20Cr13 1.4021					
10	Gland deal	Graphite					
11	Wheel nut	115mN30					
12	Handwheel	Aluminium					
13	Opening indicator	S235JR 1.0037				X6CrNiTi18-10	1.4541
14	Frame seal	Graphite					
15	Pressure ring	S235JR 1.0037		13CrMo4-5 1.7335		X6CrNiTi18-10 1.4541	
16	Clamping nut	S235JR 1.0037		13CrMo4-5 1.7335		X6CrNiTi18-10 1.4541	
17	Liquid level frame / tube	S235JR / S275JR / C45	Glass, plexi	S235JR / S275JR / C45	Glass, plexi	X6CrNiTi18-10 1.4541	Glass, plexi
18	Glass tube cover	-----	E235	-----	E235	-----	X5CrNi18-10 1.4301
19	Tube connector in the cover	-----	X20Cr13 1.4021	-----	X20Cr13 1.4021	-----	X6CrNiTi18-10 1.4541
20	Screw plug	-----	115Mn30 1.0715	-----	115Mn30 1.0715	-----	X6CrNiTi18-10 1.4541
Max. temperature		300°C	200°C*	300°C	200°C*	300°C	200°C*

* For tubes of plexi the maximum temperature is 120°C

Connections:

Flange:

DN15 – DN50 acc. to EN 1092-1

DN15 – DN50 ANSI #150, 300, 600

Other connection flanges after consultation with the manufacturer

Threaded:

G1/2", G3/4", G1"

NPT1/2", NPT3/4", NPT1"

Other threaded connections after consultation with the manufacturer

To be welded:

To be agreed with the manufacturer

Data given can be changed without notice.

Edition 01/2018

Body material	M, N, Q (PN40)																														
Type	60, 61, 62, 63, 64, 65																														
Size	0		I			II			III			IV		V			VI			VII			VIII			IX		X		XI	
	-	a	-	a	b	-	a	b	-	a	b	-	a	-	a	b	-	a	b	-	a	b	-	a	b	-	a	-	a		
L (mm)	300	305	340	335	330	370	365	360	400	395	390	430	435	460	455	450	500	505	510	520	530	545	550	565	570	600	605	650	630	700	690
A (mm)	115		140			165			195			225		255			295			315			345			405		435		475	
B (mm)	152		177			202			232			262		292			332			352			382			442		472		512	
Glass size	140x34x17		165x34x17			190x34x17			220x34x17			250x34x17		280x34x17			320x34x17			340x34x17			370x34x17			430x34x17		460x34x17		500x34x17	

NOTE: Other lengths after agreement, according to customer's requirements

Body material	M, N, Q (PN40)											
Type	70, 71, 72, 73, 74, 75											
Size	I	II	III	IV	V	VI	VII	VIII	IX	X	XI	
L (mm)	160	185	215	245	275	315	335	365	425	455	495	
A (mm)	140	165	195	225	255	295	315	345	405	435	475	
B (mm)	200	225	255	285	315	355	375	405	465	495	535	
Glass size	165x34x17	190x34x17	220x34x17	250x34x17	280x34x17	320x34x17	340x34x17	370x34x17	430x34x17	460x34x17	500x34x17	

NOTE: Other lengths after agreement, according to customer's requirements

Body material	Q, M (PN63)																														
Type	60, 61, 62, 63, 64, 65																														
Size	0		I			II			III			IV		V			VI			VII			VIII			IX		X		XI	
	-	a	-	a	b	-	a	b	-	a	b	-	a	-	a	b	-	a	b	-	a	b	-	a	b	-	a	-	a		
L (mm)	320	325	360	355	350	390	385	380	420	415	410	450	455	480	475	470	520	525	530	540	550	565	570	585	590	620	625	670	650	720	710
A (mm)	115		140			165			195			225		255			295			315			345			405		435		475	
B (mm)	172		197			222			252			282		312			352			372			402			462		492		532	
Glass size	140x34x17		165x34x17			190x34x17			220x34x17			250x34x17		280x34x17			320x34x17			340x34x17			370x34x17			430x34x17		460x34x17		500x34x17	

NOTE: Other lengths after agreement, according to customer's requirements

For versions 8... and 9... lengths according to the customer's order.

Version 6... – maximum distance – 3500 mm

Version 7... – maximum distance – 3000 mm

Version 8... – maximum distance – 1600 mm

Version 9... – maximum distance – 3000 mm

OPTIONS



Version with threaded connection
62, 63, 72, 73, 82, 83, 92, 93



Version with threaded connection
64, 65, 74, 75, 84, 85, 94, 95



Possibility of using a measuring strip

Version with drain plug

Data given can be changed without notice.

Edition 01/2018

ZETKAMA Sp. z o.o.
Ul. 3 Maja 12
PL 57-410 Ścinawka Średnia

Tel. +48 74 8652 193
Tel. +48 74 8652 111
Fax +48 74 8652 199

E-mail export@zetkama.com.pl
www.zetkama.com

PRESSURE-TEMPERATURE RATINGS

	PN		-10	RT	50 °C	100 °C	150 °C	200 °C	250 °C	300 °C
S235JR	16	bar	16	16	16	16	16	16		
13CrMo4-5			16	16	16	16	16	16		
X6CrNiTi18-10			16	16	16	16	16	16		
S235JR	40		30	40	40	40	36	32	28	23,8
13CrMo4-5			40	40	40	40	40	40	40	40
X6CrNiTi18-10			38	38	35,6	27,6	24,9	22,6	21	19,6
13CrMo4-5	63		63	63	63	63	63	63	63	63
X6CrNiTi18-10			55	63	63	62,4	58,8	55,8	53,1	

Data given can be changed without notice.

Edition 01/2018

TYPES

Figure	Body material	Size	Nominal pressure	Type
716	N Carbon steel S235JR	-	C 16 bar	80 Liquid level gauge with single glass tube and flanged connection
		-	C 16 bar	81 Liquid level gauge with single plexi tube and flanged connection
		-	C 16 bar	82 Liquid level gauge with single glass tube and threaded connection
		-	C 16 bar	83 Liquid level gauge with single plexi tube and threaded connection
		-	C 16 bar	84 Liquid level gauge with single glass tube and welded connection
		-	C 16 bar	85 Liquid level gauge with single plexi tube and welded connection
		-	C 16 bar	90 Liquid level gauge with combined glass tube and flanged connection
		-	C 16 bar	91 Liquid level gauge with combined plexi tube and flanged connection
		-	C 16 bar	92 Liquid level gauge with combined glass tube and threaded connection
		-	C 16 bar	93 Liquid level gauge with combined plexi tube and threaded connection
		-	C 16 bar	94 Liquid level gauge with combined glass tube and welded connection
		-	C 16 bar	95 Liquid level gauge with combined plexi tube and welded connection
		716	N Carbon steel S235JR	0 - XI
0 - XI	E 40 bar			61 Liquid level gauge with central frame, transparent glass and flanged connection
0 - XI	E 40 bar			62 Liquid level gauge with central frame, reflex glass and threaded connection
0 - XI	E 40 bar			63 Liquid level gauge with central frame, transparent glass and threaded connection
0 - XI	E 40 bar			64 Liquid level gauge with central frame, reflex glass and welded connection
0 - XI	E 40 bar			65 Liquid level gauge with central frame, transparent glass and welded connection
I - XI	E 40 bar			70 Liquid level gauge with side frame, reflex glass and flanged connection
I - XI	E 40 bar			71 Liquid level gauge with side frame, transparent glass and flanged connection
I - XI	E 40 bar			72 Liquid level gauge with side frame, reflex glass and threaded connection
I - XI	E 40 bar			73 Liquid level gauge with side frame, transparent glass and threaded connection
I - XI	E 40 bar			74 Liquid level gauge with side frame, reflex glass and welded connection

Data given can be changed without notice.

Edition 01/2018

FIG.716



		I - XI	E 40 bar	75 Liquid level gauge with side frame, transparent glass and welded connection
716	N Carbon steel 13CrMo4-5	0 - XI	F 63 bar	60 Liquid level gauge with central frame, reflex glass and flanged connection
		0 - XI	F 63 bar	61 Liquid level gauge with central frame, transparent glass and flanged connection
		0 - XI	F 63 bar	62 Liquid level gauge with central frame, reflex glass and threaded connection
		0 - XI	F 63 bar	63 Liquid level gauge with central frame, transparent glass and threaded connection
		0 - XI	F 63 bar	64 Liquid level gauge with central frame, reflex glass and welded connection
		0 - XI	F 63 bar	65 Liquid level gauge with central frame, transparent glass and welded connection
716	Q Alloy steel 13CrMo4-5	-	C 16 bar	80 Liquid level gauge with single glass tube and flanged connection
		-	C 16 bar	81 Liquid level gauge with single plexi tube and flanged connection
		-	C 16 bar	82 Liquid level gauge with single glass tube and threaded connection
		-	C 16 bar	83 Liquid level gauge with single plexi tube and threaded connection
		-	C 16 bar	84 Liquid level gauge with single glass tube and welded connection
		-	C 16 bar	85 Liquid level gauge with single plexi tube and welded connection
		-	C 16 bar	90 Liquid level gauge with combined glass tube and flanged connection
		-	C 16 bar	91 Liquid level gauge with combined plexi tube and flanged connection
		-	C 16 bar	92 Liquid level gauge with combined glass tube and threaded connection
		-	C 16 bar	93 Liquid level gauge with combined plexi tube and threaded connection
		-	C 16 bar	94 Liquid level gauge with combined glass tube and welded connection
		-	C 16 bar	95 Liquid level gauge with combined plexi tube and welded connection
716	Q Alloy steel 13CrMo4-5	0 - XI	E 40 bar	60 Liquid level gauge with central frame, reflex glass and flanged connection
		0 - XI	E 40 bar	61 Liquid level gauge with central frame, transparent glass and flanged connection
		0 - XI	E 40 bar	62 Liquid level gauge with central frame, reflex glass and threaded connection
		0 - XI	E 40 bar	63 Liquid level gauge with central frame, transparent glass and threaded connection
		0 - XI	E 40 bar	64 Liquid level gauge with central frame, reflex glass and welded connection
		0 - XI	E 40 bar	65 Liquid level gauge with central frame, transparent glass and welded connection
		I - XI	E 40 bar	70 Liquid level gauge with side frame, reflex glass and flanged connection

Data given can be changed without notice.

Edition 01/2018

FIG.716



		I - XI	E 40 bar	71 Liquid level gauge with side frame, transparent glass and flanged connection
		I - XI	E 40 bar	72 Liquid level gauge with side frame, reflex glass and threaded connection
		I - XI	E 40 bar	73 Liquid level gauge with side frame, transparent glass and threaded connection
		I - XI	E 40 bar	74 Liquid level gauge with side frame, reflex glass and welded connection
		I - XI	E 40 bar	75 Liquid level gauge with side frame, transparent glass and welded connection
716	Q Alloy steel 13CrMo4-5	0 - XI	F 63 bar	60 Liquid level gauge with central frame, reflex glass and flanged connection
		0 - XI	F 63 bar	61 Liquid level gauge with central frame, transparent glass and flanged connection
		0 - XI	F 63 bar	62 Liquid level gauge with central frame, reflex glass and threaded connection
		0 - XI	F 63 bar	63 Liquid level gauge with central frame, transparent glass and threaded connection
		0 - XI	F 63 bar	64 Liquid level gauge with central frame, reflex glass and welded connection
		0 - XI	F 63 bar	65 Liquid level gauge with central frame, transparent glass and welded connection
716	M Acid resistant steel X6CrNiTi18-10	-	C 16 bar	80 Liquid level gauge with single glass tube and flanged connection
		-	C 16 bar	81 Liquid level gauge with single plexi tube and flanged connection
		-	C 16 bar	82 Liquid level gauge with single glass tube and threaded connection
		-	C 16 bar	83 Liquid level gauge with single plexi tube and threaded connection
		-	C 16 bar	84 Liquid level gauge with single glass tube and welded connection
		-	C 16 bar	85 Liquid level gauge with single plexi tube and welded connection
		-	C 16 bar	90 Liquid level gauge with combined glass tube and flanged connection
		-	C 16 bar	91 Liquid level gauge with combined plexi tube and flanged connection
		-	C 16 bar	92 Liquid level gauge with combined glass tube and threaded connection
		-	C 16 bar	93 Liquid level gauge with combined plexi tube and threaded connection
		-	C 16 bar	94 Liquid level gauge with combined glass tube and welded connection
		-	C 16 bar	95 Liquid level gauge with combined plexi tube and welded connection
716	M Acid resistant steel X6CrNiTi18-10	0 - XI	E 40 bar	60 Liquid level gauge with central frame, reflex glass and flanged connection
		0 - XI	E 40 bar	61 Liquid level gauge with central frame, transparent glass and flanged connection
		0 - XI	E 40 bar	62 Liquid level gauge with central frame, reflex glass and threaded connection

Data given can be changed without notice.

Edition 01/2018

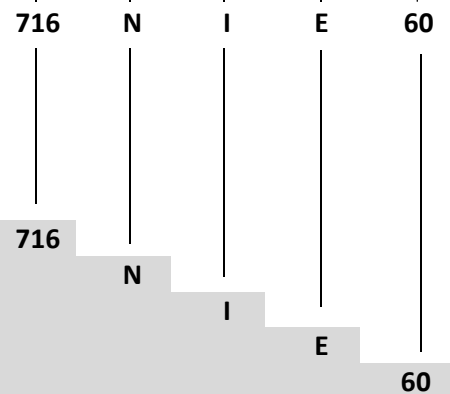
FIG.716

0 - XI	E 40 bar	63	Liquid level gauge with central frame, transparent glass and threaded connection
0 - XI	E 40 bar	64	Liquid level gauge with central frame, reflex glass and welded connection
0 - XI	E 40 bar	65	Liquid level gauge with central frame, transparent glass and welded connection
I - XI	E 40 bar	70	Liquid level gauge with side frame, reflex glass and flanged connection
I - XI	E 40 bar	71	Liquid level gauge with side frame, transparent glass and flanged connection
I - XI	E 40 bar	72	Liquid level gauge with side frame, reflex glass and threaded connection
I - XI	E 40 bar	73	Liquid level gauge with side frame, transparent glass and threaded connection
I - XI	E 40 bar	74	Liquid level gauge with side frame, reflex glass and welded connection
I - XI	E 40 bar	75	Liquid level gauge with side frame, transparent glass and welded connection

ORDERING

Figure	Body material	Size	Nominal pressure	Type
716	N Carbon steel S235JR	0 - XI	E 40 bar	60 Liquid level gauge with central frame, reflex glass and flanged connection

Order example according to the index



zGAU liquid level gauge with reflex or transparent glass
 Carbon steel
 Size
 Nominal pressure PN 40
 Version with central frame, reflex glass and flanged connection

Data given can be changed without notice.

Edition 01/2018