

figure

402

ends
formflanged
straight**CHECK VALVE zCHE**

body material	nominal pressure	nominal diameter	max. temperature
A grey cast iron	C 16 bar	DN 50-200	80°C
	B 10 bar	DN 250-300	

**FEATURES**

- allows installation in all positions
- low head losses
- no maintenance

APPLICATION

- hot and cold water plants
- low-pressure steam plants
- air conditioning systems

Data given can be changed without notice.

Edition 03/2016



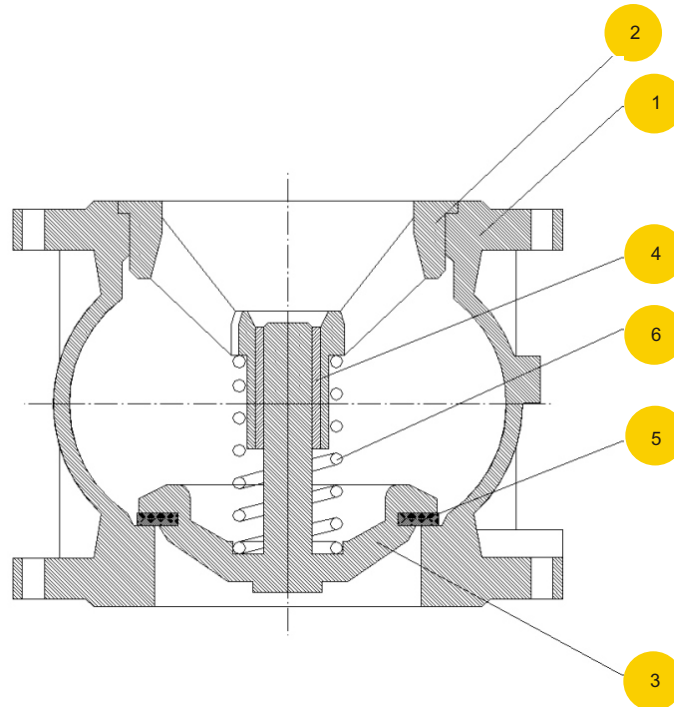
figure

402

ends
form

flanged
straight

MATERIALS



	body material	A
	type	52
1	body	EN-GJL-250 5.1301 (ex.JL1040)
2	guide	EN-GJS-400-15
3	closing system	EN-GJS-400-15
4	guiding stem	brass P/CuZn40Pb2
5	spring	AISI 302
6	seal	EPDM
	max. temperature	80°C



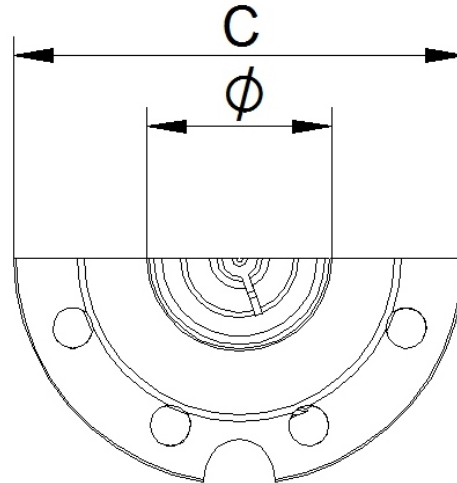
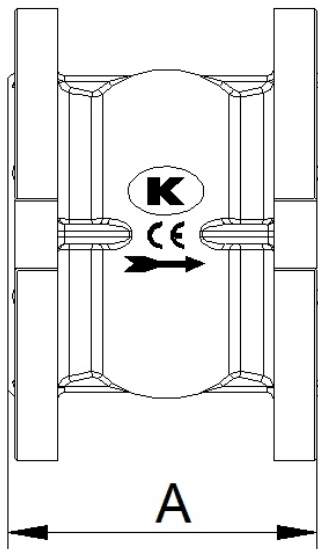
figure

402

ends
form

flanged
straight

DIMENSIONS



DN	∅	A	C	Kv	
mm				m ³ /h	kg
50	50	100	165	99	5,7
65	65	120	185	145	8,7
80	80	140	200	258	10,8
100	101	170	220	360	13,5
125	127	200	250	516	21,0
150	145	230	285	620	30,0
200	194	300	340	985	49,0
250	245	370	395	1620	73,3
300	295	410	445	2365	173,5

Data given can be changed without notice.

Edition 03/2016



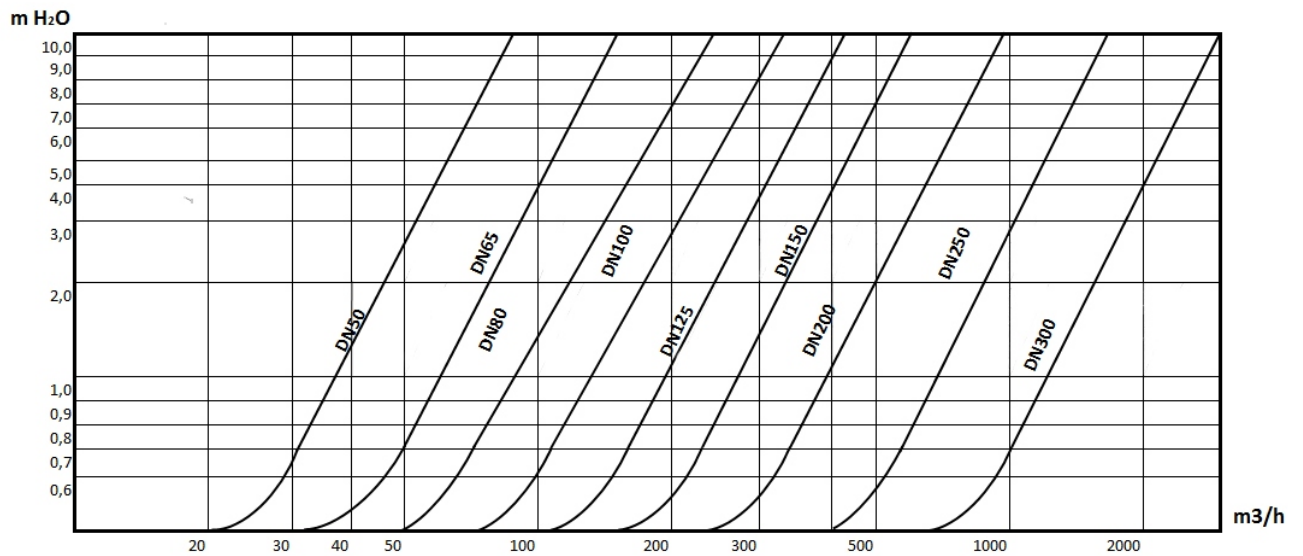
figure

402

ends
form

flanged
straight

HYDRAULIC CHARACTERISTICS



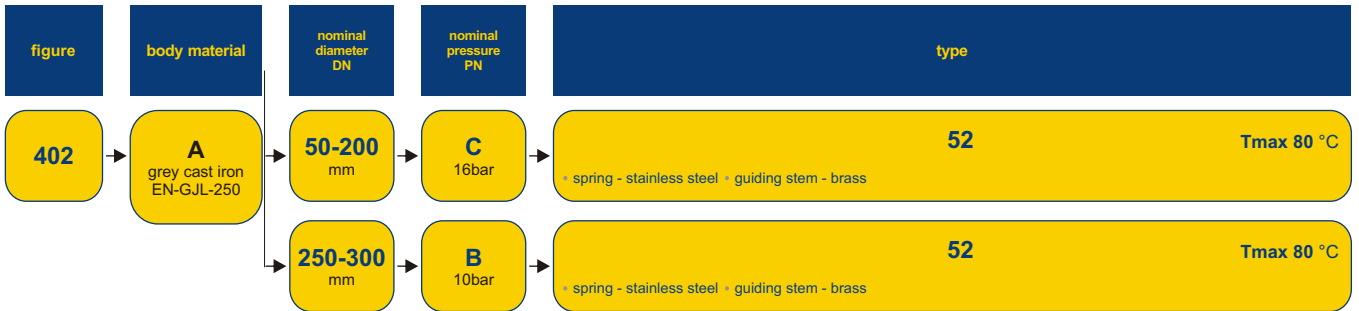
Data given can be changed without notice.

Edition 03/2016



figure	402
ends form	flanged straight

TYPES



ORDERING

To place an order please use our product number (index)



ORDER EXAMPLE

